

**273/1**  
**GEOGRAPHY**  
**Paper 1**  
**2024**  
2¾ hours



**UGANDA NATIONAL EXAMINATIONS BOARD**

**Uganda Certificate of Education**

**GEOGRAPHY**

**Paper 1**

2 hours 45 minutes

**INSTRUCTIONS TO CANDIDATES:**

*This paper consists of **two** sections; **A** and **B**. It has **six** examination items.*

*Section **A** has **two** compulsory items.*

*Section **B** has **two** parts; **I** and **II**. Answer **one** item from each part.*

*Answer **four** examination items in **all**.*

*You may use diagrams where applicable to illustrate your answers.*

*Any additional item(s) answered will **not** be scored.*

***All** answers **must** be written in the answer booklet(s) provided.*

## SECTION A: Map and Photograph Skills

*Answer all items in this section.*

### Item 1: Map Skills

For this item use the East Africa 1:50,000(Uganda) map extract of Kijura series Y732, sheet 56/2, Edition3-U.S.D, the information in the text below and the support materials in Fig. 1 provided to answer the tasks given:

- (a) Adyeri lives in Nyakabale Tea Estate in the Southern part of the area shown on the map extract. Whenever she is traveling she picks the taxi from the road junction at grid reference 122853. She wants to visit her aunt, a nursing officer at Kyabajasi hospital (grid reference 123899). The taxi fare is sh2000 per head per kilometre.

**Task:** Determine the amount of money she will spend on the journey.

- (b) The communities living in Hakibaale one of the sub-counties shown on the map extract of Kijura, carry out large scale tea growing. Most of their farms are found in areas East of Easting 07 and South of Northing 96.

The farmers have plans to expand their farms. Expansion in the Northern and Western directions is limited by the steep and rugged relief. The farmers are requesting government to allow them expand their farms towards the Southern and Eastern directions up to Burahya-Mwenge County boundary.

The local government Secretary for Environment is opposed to their request on grounds that it may negatively affect the natural environment in the area but farmers are determined to go on with the expansion.

### Support materials:



(a)



(b)

**Fig.1**

### Task:

Using evidence from the map extract and the support materials provided, explain the kind of advice you would give to the farmers about their planned expansion of tea farms.

### Item 2: Photograph Skills

Study Fig. 2, a photograph taken from one of the places in Western Uganda, and the text provided below it.



Fig. 2

You are working with Sunset Tours and Travel Company Limited as a tour guide. A group of American tourists are planning to visit your country during their summer holiday. They have visited your company website and have booked your company to help them tour certain areas of interest. The company manager is of the view that the tourists should visit the area shown in the photograph. As their guide-to- be, the company manager has instructed you to prepare a written descriptive account informing the visitors of the attractions they will see and activities they will engage in when they come to visit the area identified and the likely challenges they may face.

**Task:**

- (a) Draw a landscape sketch of the photograph and on it mark and name the features found in the area shown in the photo.
- (b) Describe for the visitors the attractions they will see and the activities they will engage in when they visit the area. Give evidence from the photograph.
- (c) What recommendations would you make to the local community to improve the area for tourism?

**SECTION B**

*This section has two parts I and II.*

**Part I**

*Answer one item from this part.*

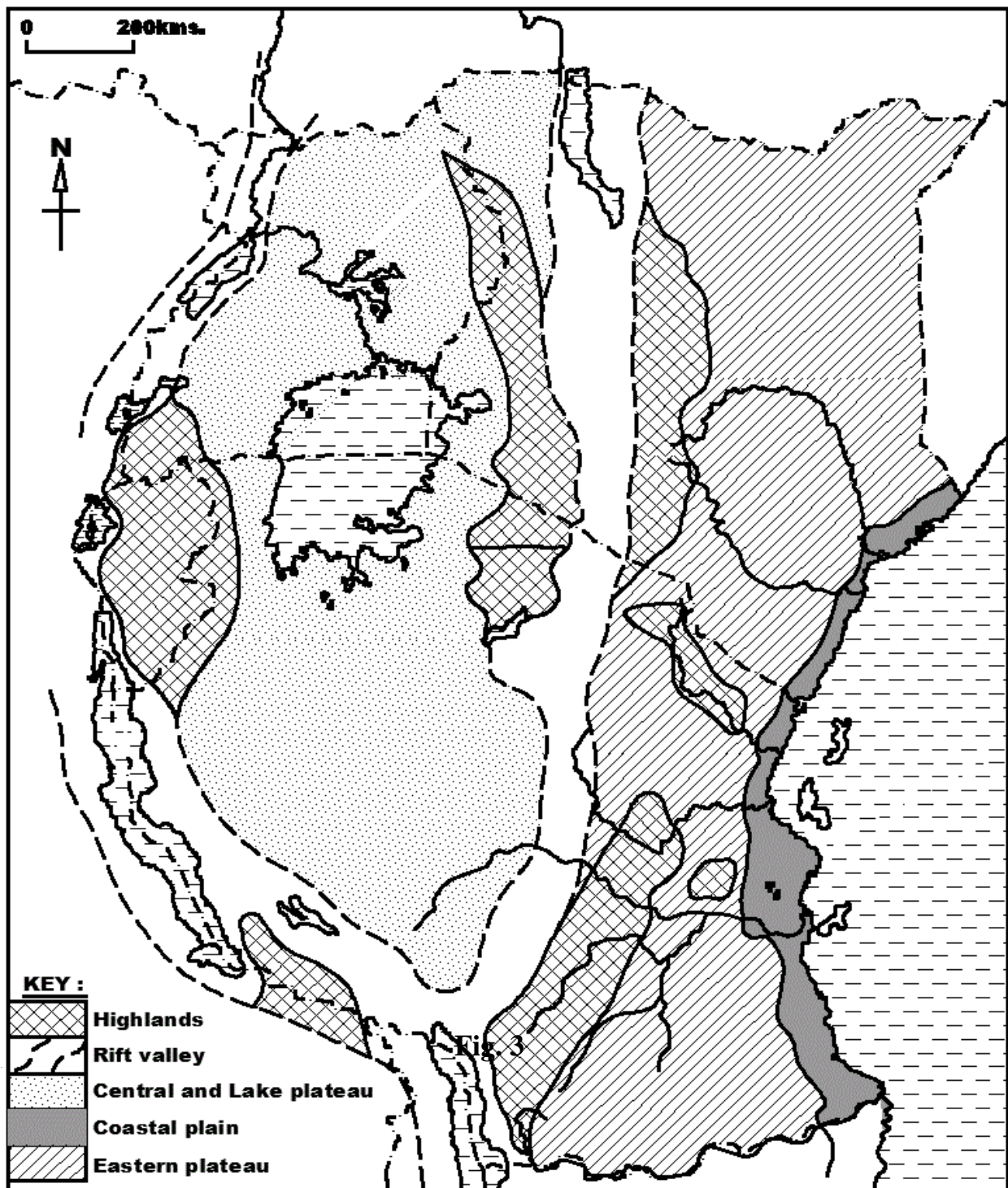
**Item 3.**

Study the text and Fig. 3 provided and use them to answer this item.

Mary and her family have been living in a foreign country for the last 30 years. The family plans to return to East Africa and establish their home in any one of the relief regions where they can carry out vegetable farming. However, they have little knowledge about the geography of East Africa.



**Support material:** Map of East Africa showing relief regions



**Task:**

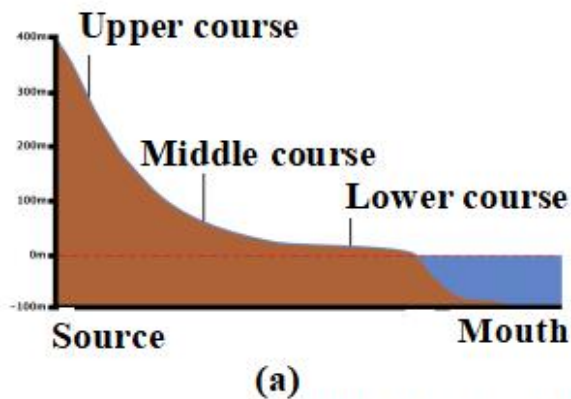
Write an essay of about **250 - 300** words advising Mary and her family on where they can settle and carry out vegetable farming.

#### Item 4.

Your sub-county has a number of physical features one of which is a river which originates from one of the highlands in the area and ends in the lake in the neighbouring sub-county. The government is encouraging all sub-counties in the country to use the existing natural resources to improve lives of people. However, your sub-county has not been able to use the river.

You have been invited for a council meeting to sensitise the community members on how they can use the river to improve their lives.

#### Support materials:



The long profile of a river

Fig.4

#### Task:

Prepare a written speech of about 500 words which you will present in the council meeting.

## Part II

Answer **one** item from this part.

### Item 5.

According to the 2021 Uganda Population Survey, the country's population was estimated to be 42 million, and growing at a rate of 3 % per year.

At this rate, the country's population is expected to reach 72.4 million people by 2040; representing an annual increase of 1.6 million people per year.

Members of your community have different views about this rate of population growth. Some see it as a benefit, while others think it is a danger to the country.

#### Support materials:

Table showing Uganda's population between 1980 and 2023

Year	Population (in millions)
1980	12.6
1991	16.7
2002	24.2
2014	34.6
2023	48.6

**Adopted:** (UBOS, and Trending Economics)

#### Task:

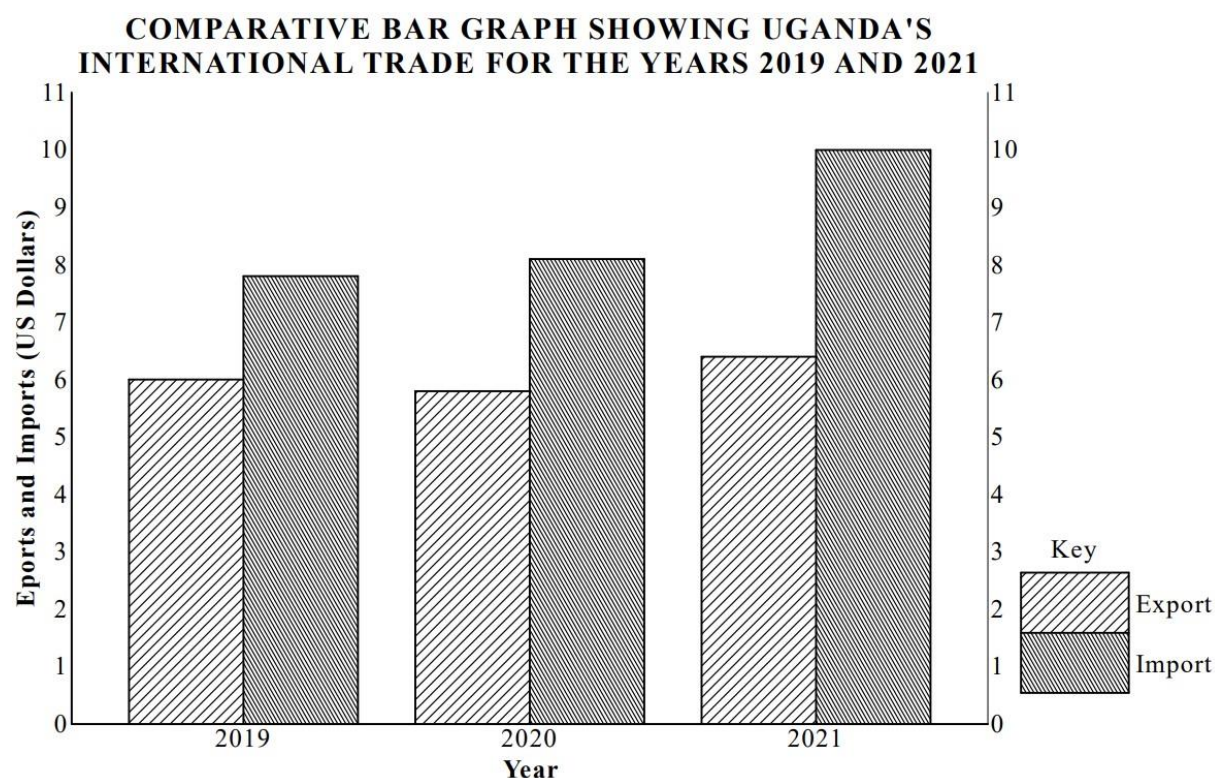
- Draw a suitable graph to show the information in the table.
- Using the information provided in the text and table, write an article of between **250 – 300** to be published in one of the local newspapers that will help you deal with the concerns of the members of your community.

### Item 6.

Over the years, Uganda government has put in place several measures to increase the income from exports. These include; setting up the Uganda Export Promotion Board, signing trade agreements with other countries, construction of roads and processing exports to add value.

Despite all these efforts, the country's balance of trade has remained unfavourable. Traders in your community are interested in understanding how they can contribute towards improving this situation but they lack the necessary information of how to do so.

**Support materials:**



**Task:**

- (a) Using evidence from the graph only, explain the likely effects of this trend of trade on the development of Uganda.
- (b) Advise traders in your community on how they can contribute towards improving the country's balance of trade.

**273/1**  
**GEOGRAPHY**  
**Paper 1**  
**2024**



**UGANDA NATIONAL EXAMINATIONS BOARD**

**Uganda Certificate of Education**

**GEOGRAPHY**

**Paper 1**

# ***SCORING GUIDE***



## Item 1

- (a) Road distance from 122853 to 123899

Amount she will pay is  $4.4 \text{ km} \times 2000$   
 $= 8,800 \text{ shillings}$

**Scoring:**

*Accurate location and calculation of distance* 02

*Partially correct calculation* 01

*Wrong or no response* 00

- (b) (i) Identification of the problem:

Lack of knowledge about effects of clearing natural vegetation.

**Scoring:**

*Correct statement* 01

*Wrong or no statement* 00

- (ii) Sketch map of the area

**Scoring:**

*Well-drawn sketch map of the area with most features* 03

*Sketch map with some features well drawn* 02

*Sketch map with few features poorly drawn* 01

*No sketch map/wrong sketch* 00

- (iii) Burahya and Mwenge counties are forest reserves. Expansion of tea plantation in these counties will destroy forest reserves and these might have the following negative effects on the lives of the people.

- Destruction of habitat for wildlife e.g. animals, reptiles and birds that live in forests. (This will make them invade human habitats)
- Destruction of valuable plant species that are of medicinal value.
- Destruction of valuable sources of wood fuel, fruits and building materials.
- Over warming of the environment because plants that cool it through evapo-transpirations are destroyed.
- Disruption of rainfall pattern that will affect agricultural production.
- Drying of rivers that have catchment in the forests will cause water scarcity.
- Forests act as carbon sinks.

**Scoring:**

*5 or more effects of clearing natural vegetation* 03

*3 to 4 effects of clearing natural vegetation* 02

*1 to 2 effects of clearing natural vegetation* 01

*Wrong or no response* 00

(iv) Statement of opinion:

They should therefore not expand the forested areas since it has a lot of negative effects to both the environment and peoples' lives. Instead they can increase production through:

- Using fertilizers to improve the yield.
- Using/Planting high yielding variety of tea
- Diversification of economic activities to avoid dependence on tea growing.
- Improve marketing of tea to increase profitability.

**Scoring:**

*Correct statement of opinion with evidence* 01

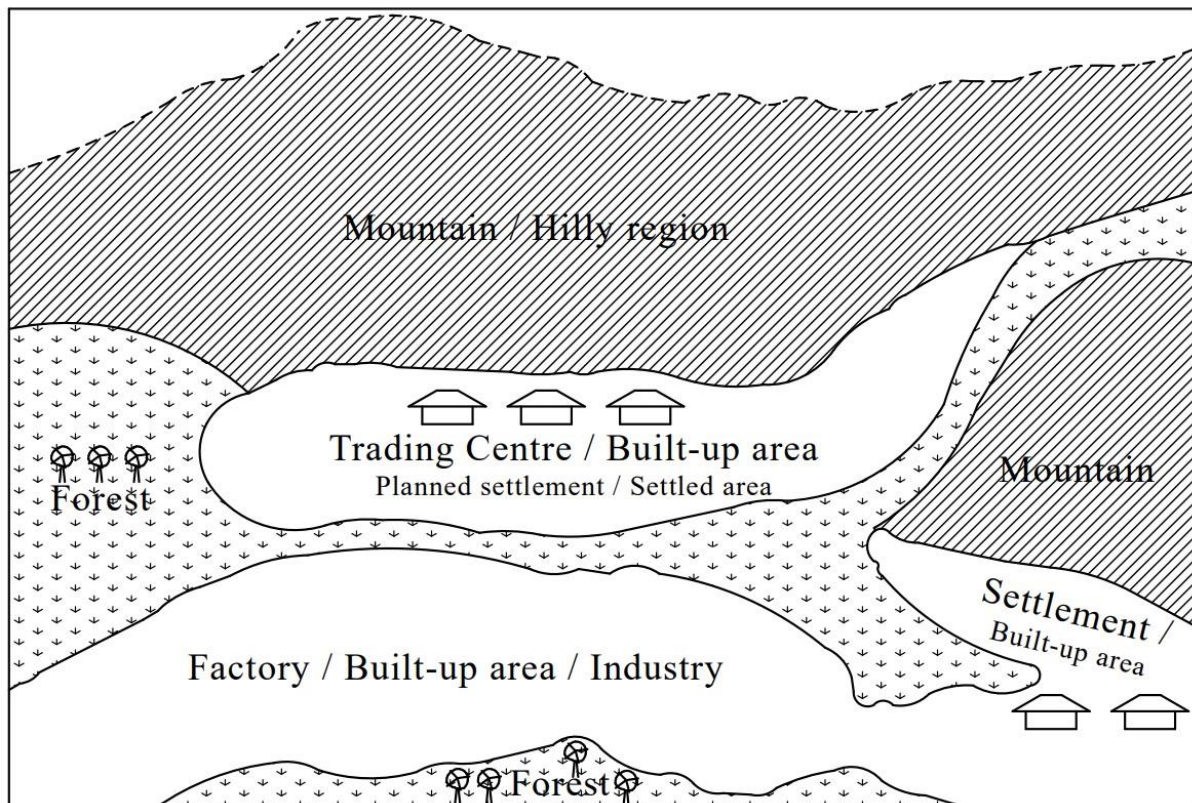
*No or wrong statement* 00

(Total score 10)

**Item 2**

(a)

**A LAND SCAPE SKETCH SHOWING FEATURES SHOWN  
IN THE PHOTOGRAPH**



**Note:**

*The features in the photograph include;*

- upland/mountain /hilly area
- trading centre/built-up area/planned settlements/settled area
- factory/industrial area
- forested area/forestry

**Scoring:**

<i>Accurately drawn landscape sketch with all details/features</i>	<i>03</i>
<i>Accurately drawn landscape sketch with some details/features</i>	<i>02</i>
<i>Accurately drawn landscape sketch with very few details/features</i>	<i>01</i>
<i>Wrong or no response</i>	<i>00</i>

(b) (i) The visitors will see the following attractions:

- Mountains
- Forests
- Factories
- Urban centres/Trading centre
- Wild animals
- Landscape
- Plants

**Scoring:**

<i>5 or more tourist attractions</i>	<i>02</i>
<i>3 to 4 tourist attractions</i>	<i>01</i>
<i>Wrong or no response</i>	<i>00</i>

(ii) The visitors will engage in the following activities

- Mountain climbing
- Sun bathing
- Forest walk
- Bird watching
- Wild game hunting
- Cultural dances/music

**Scoring:**

<i>5 or more activities</i>	<i>02</i>
<i>3 to 4 activities</i>	<i>01</i>
<i>Wrong or no response</i>	<i>00</i>

(c) The local community can do the following to improve the tourism in the area:

- Be friendly to visitors.
- Develop cultural attractions e.g. artworks, traditional dances, etc.
- Protect the environment e.g. forest, mountains etc.
- Build tourist facilities such as accommodation, restaurants etc.
- Build and rehabilitate transport facilities.
- Train local tour guides.

**Scoring:**

<i>5 or more recommendations with evidence from the photo</i>	<i>03</i>
<i>3 to 4 recommendations with evidence from the photo</i>	<i>02</i>
<i>1 to 2 recommendations with evidence from the photo</i>	<i>01</i>
<i>Wrong or no response</i>	<i>00</i>

**(Total score 10)**

### Item 3

- (a) (i) Identification of the problem:  
Lack of knowledge about suitable relief region for settlement and vegetable farming.

**Scoring:**

*Correct statement* 01  
*Wrong or no statement* 00

- (ii) The essay should highlight:

- Areas with good soil for vegetable growing.
- Access to vegetable market.
- Access to skilled labour force in vegetable farming.
- Reliability of rainfall
- Transport and communication facilities
- Absence of pests and diseases
- Security
- Nature of relief
- Nature of vegetation cover
- Drainage features e.g. rivers, lakes
- etc.

**Scoring:**

*5 or more characteristics with evidence* 03  
*3 to 4 characteristics with evidence* 02  
*1 to 2 characteristics with evidence* 01  
*Wrong or no response* 00

- (iii) Statement of opinion:

**Scoring:**

*Correct statement of opinion with evidence* 01  
*No or wrong statement* 00

**(Total score 10)**

### Item 4

- (a) (i) Identification of the problem:  
Lack of knowledge about how to use the river to improve people's lives.

**Scoring:**

*Correct statement* 01  
*Wrong or no statement* 00

(ii) Relationship between drainage and people's ways of life.

- Farming
- Fishing
- Navigation
- Climate
- Settlement
- Health e.g. diseases
- Crops grown

**Scoring:**

<i>3 or more relationships</i>	<i>03</i>
<i>2 relationships</i>	<i>02</i>
<i>1 relationship</i>	<i>01</i>
<i>Wrong or no response</i>	<i>00</i>

(iii) The river has its upper, middle and lower courses in the area.

The written speech should include:

- Identification of upper course of a river and features found in it. It should go ahead to state (mention the uses of each of these features to generate revenue.
  - o Such features include V- Shaped valleys, Interlocking spurs, Rapids, Waterfalls, Gorges and Plunge pools. These can be developed into tourist attractions.
  - o Water falls for generation of HEP. This may be leased out to a power company.
  - o Establishing recreation facilities etc. such as rafting.
- The Middle stage/course has:
  - o More gentle gradient
  - o Flow of water is calm
  - o Broad valley

Besides tourism, this course can be developed into fish landing sites, ferry or canoe crossings, market places by its bank.

- The senile/lower stage/course has:
  - o Wide valley, river depositional features such as Oxbow lakes, Deltas, Meanders, Levees, Bluffs etc.
  - o These can be developed into tourist attractions. Fishing is also possible.



**Scoring:**

<i>5 or more features and their uses</i>	<i>03</i>
<i>3 to 4 features and their uses</i>	<i>02</i>
<i>1 to 2 features and their uses</i>	<i>01</i>
<i>Wrong or no response</i>	<i>00</i>

(iv) Statement of opinion:

**Scoring:**

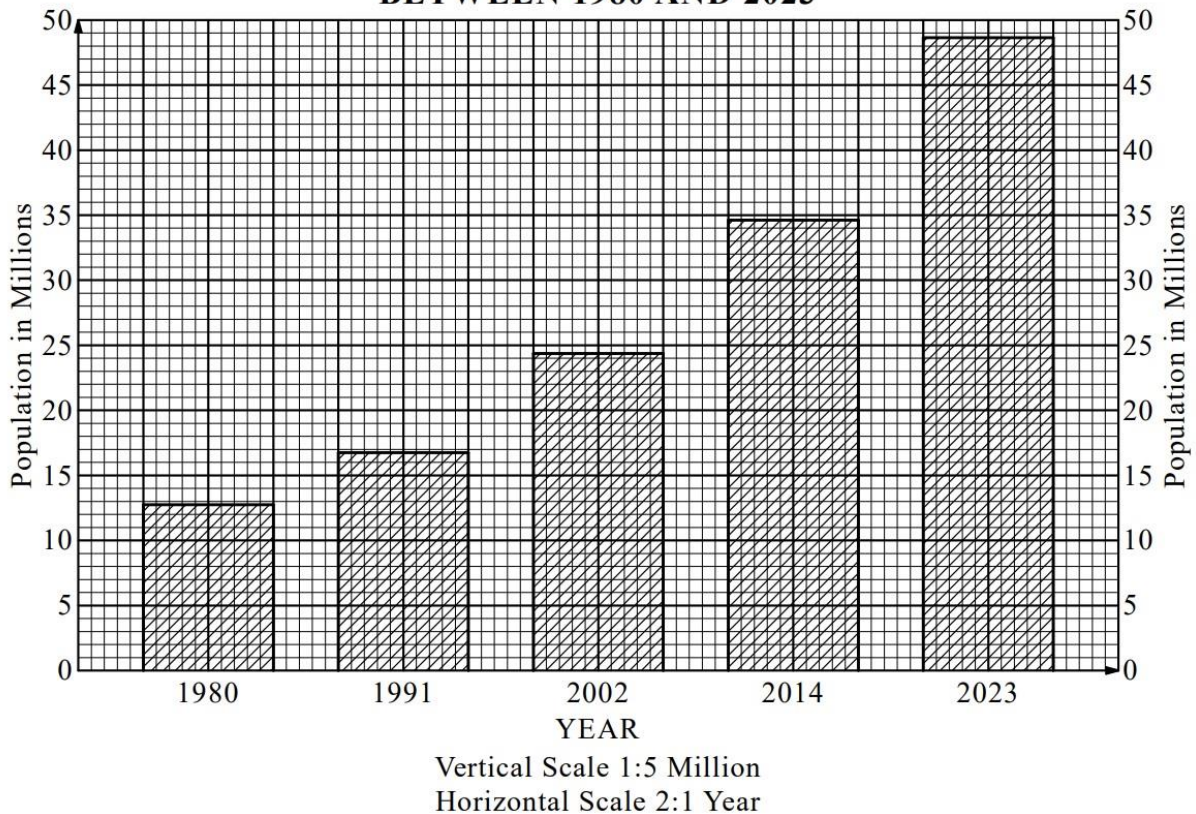
<i>Correct statement of opinion with evidence</i>	<i>01</i>
<i>No or wrong statement</i>	<i>00</i>

**(Total score 08)**

**Item 5**

(a)

**A BAR GRAPH SHOWING UGANDA'S POPULATION  
BETWEEN 1980 AND 2023**



**Scoring:**

<i>Accurately drawn graph with all details</i>	<i>03</i>
<i>Accurately drawn graph with some details</i>	<i>02</i>
<i>Graph without proper labelling</i>	<i>01</i>
<i>Wrong or no response</i>	<i>00</i>

(b) (i) Identification of the problem:

Lack of information/knowledge about the effects of population growth.

**Scoring:**

<i>Correct statement</i>	<i>01</i>
<i>Wrong or no statement</i>	<i>00</i>

(ii) The article should point out the:

*advantages of high population which include;*

- Large local market
- Plenty of labour
- Cultural diversity
- Lower cost of production
- Efficient utilisation of social services such as education, health care etc.
- Wider tax base
- Potential for security e.g. army
- etc.

**Scoring:**

<i>5 or more advantages</i>	<i>03</i>
<i>3 to 4 advantages</i>	<i>02</i>
<i>1 to 2 advantages</i>	<i>01</i>
<i>Wrong or no response</i>	<i>00</i>

*disadvantages of high population:*

- Over exploitation of natural resources.
- Environmental degradation
- High crime rates
- Unemployment.
- High cost of providing social services
- Decline in people's welfare/standard of living
- etc.

**Scoring:**

<i>3 or more disadvantages</i>	<i>02</i>
<i>1 to 2 disadvantages</i>	<i>01</i>
<i>Wrong or no response</i>	<i>00</i>

(iv) Statement of opinion:

Could point out that when the population is planned well in advance its negative effects can be reduced or otherwise.

**Scoring:**

<i>Correct statement of opinion with evidence</i>	<i>01</i>
<i>No or wrong statement</i>	<i>00</i>

**(Total score 10)**

**Item 6**

- (a) (i) Identification of the problem:

Lack of information/knowledge by traders on how to contribute towards improving balancing of trade

**Scoring:**

*Correct statement* 01  
*Wrong or no statement* 00

- (ii) Interpretation of the information on the bar graph.

**Scoring:**

*Accurately interprets 5 or more details on the graph* 03  
*Accurately interprets 3 - 4 details on the graph* 02  
*Accurately interprets 1 - 2 details on the graph* 01  
*Wrong or no response* 00

- (iii) Likely effects of higher import than export on development of a country include

- Higher inflation.
- Weaker local currency.
- Over dependence on foreign goods.
- borrowing to finance imports.
- Increases foreign debt.
- Unemployment.
- Lowering demand for locally made goods.
- Over domination of the economy by foreign investors.

**Scoring:**

*3 or more effects of poor balance of trade* 02  
*1 to 2 effects of poor balance of trade* 01  
*Wrong or no response* 00

- (b) How local traders can improve on a country's balance of trade:

- Selling/promoting locally produced goods.
- Setting up import substitutions industries.
- Finding foreign markets for locally produced goods.
- Value addition to local products.
- Consuming locally produced goods.
- Increasing the variety of products for export.
- forming local trading groups or associations.

**Scoring:**

*5 or more ways of improving balance of trade by traders* 03  
*3 to 4 ways of improving balance of trade by traders* 02  
*1 to 2 ways of improving balance of trade by traders* 01  
*Wrong or no response* 00

(iii) Statement of opinion:

Could point out the different ways in which traders can contribute to improvement in the balancing of payments giving evidence/examples.

**Scoring:**

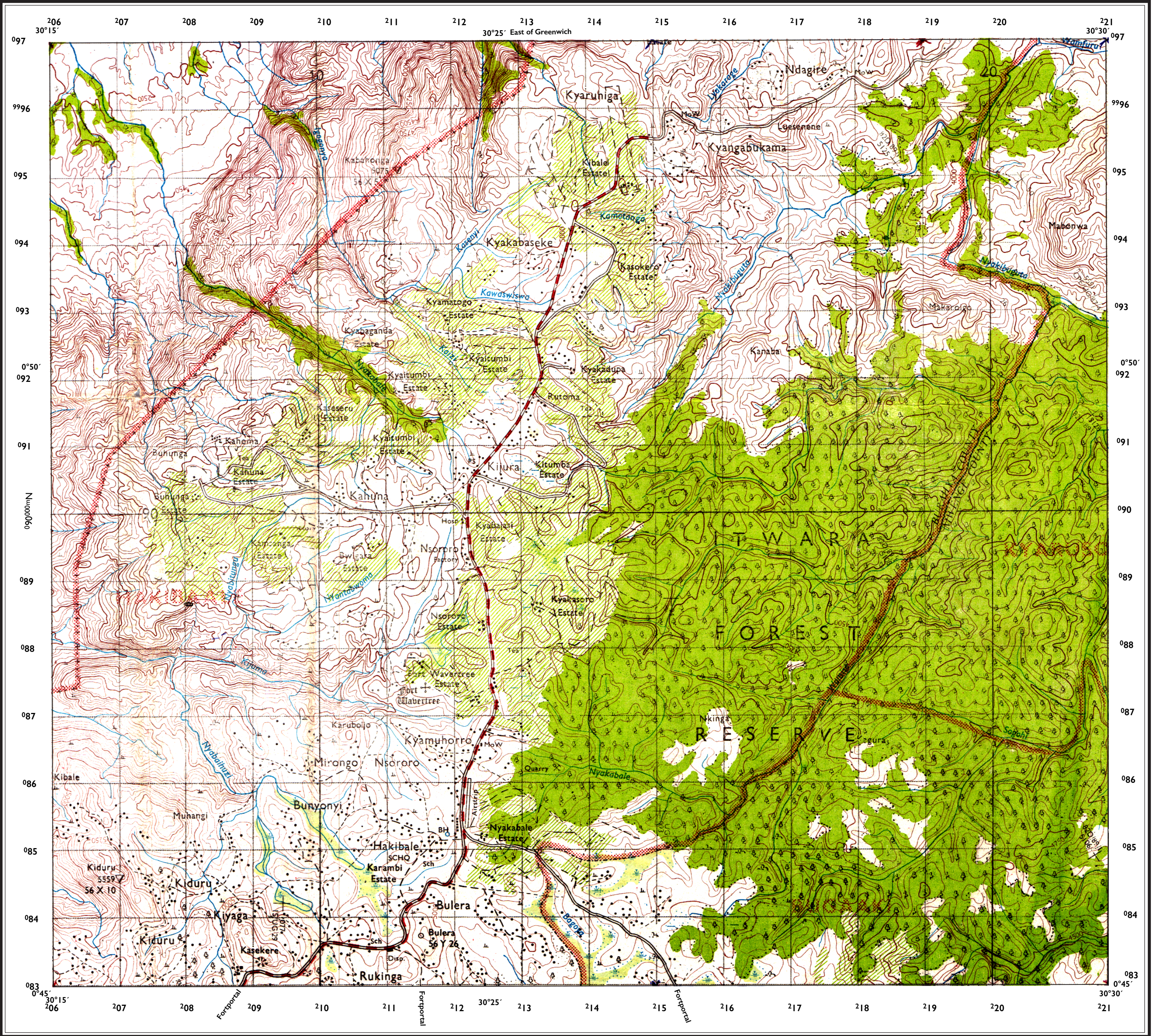
*Correct statement of opinion with evidence* 01

*No or wrong statement* 00

**(Total score 10)**

SAMPLE





SCALE 1: 50,000

